

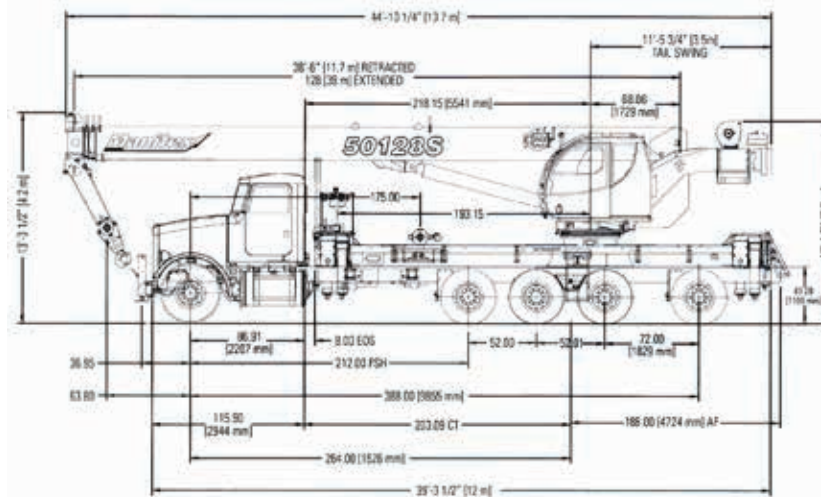
50128S Manitex 50T Crane



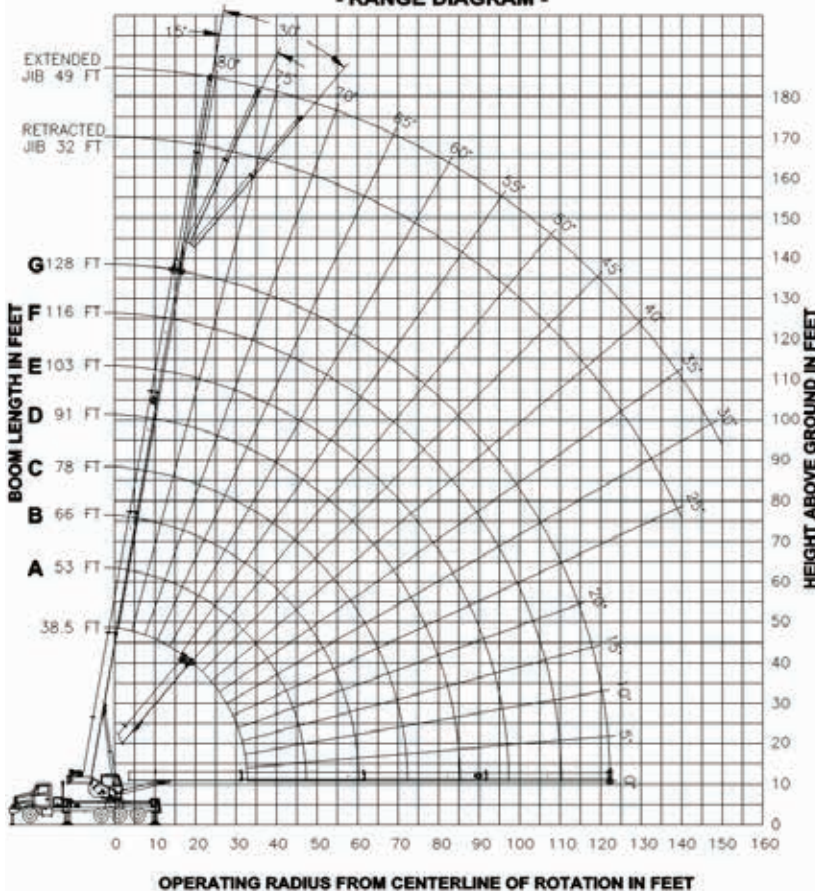
Put our Crane Rail to Work for you:

- NCCCO Certified Operators
- Certified ODOT CDL Drivers
- Rigging Available for Rental
- Certified Welders & Ironworkers Available
- Certified Rigger / Signalman Personnel Available
- BWC Drug Free Safety Program –Advanced Level
- Nights / Weekends Available
- OSHA 30 Compliant

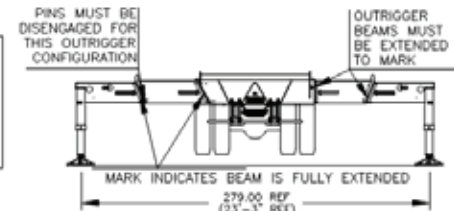
PARTNERING TOGETHER FOR THE SUCCESS OF THE PROJECT



- RANGE DIAGRAM -



USE THIS CHART ONLY WHEN ALL OUTRIGGER BEAMS ARE FULLY EXTENDED



MAIN BOOM LIFTING CAPACITIES

BOOM LENGTH (FT)	BOOM LENGTH 38.5 FT			BOOM LENGTH 53 FT (A)			BOOM LENGTH 66 FT (B)			BOOM LENGTH 78 FT (C)			LOAD BRIDGE (FT)				
	LOADED BOOM ANGLE (DEG)	CODE 1	CODE 3	LOADED BOOM ANGLE (DEG)	CODE 1	CODE 3	LOADED BOOM ANGLE (DEG)	CODE 1	CODE 3	LOADED BOOM ANGLE (DEG)	CODE 1	CODE 3					
		OVER REAR (LBS)	FULL 360° (LBS)		OVER REAR (LBS)	FULL 360° (LBS)		OVER REAR (LBS)	FULL 360° (LBS)		OVER REAR (LBS)	FULL 360° (LBS)					
6	73.5	100000	100000										6				
8	70.5	86600	86600										8				
10	67	76400	76400	74.5	51000	51000	78	51000	51000				10				
12	64	68400	68400	72.5	51000	51000	76.5	51000	51000	79	41710	41710	12				
15	59	59000	59000	68.5	51000	51000	73.5	46650	46650	77	37880	37880	15				
20	49.5	47670	47670	62.5	45700	45700	69	39300	39300	73	32140	32140	20				
25	38.5	36900	36900	56	37680	37680	64	33450	33450	69	27890	27890	25				
30	23.5	29590	26680	49.5	30410	27890	59	29140	28440	65	24230	24230	30				
35				41.5	25170	20650	54	25490	21160	61	21310	21310	35				
40				32	20620	15940	48	21090	16440	56.5	19160	16730	40				
45				18.5	16770	12610	42	17270	13130	52	17070	13410	45				
50							34.5	14390	10670	48.5	14660	10950	50				
55							25	12140	8760	41	12420	9050	55				
60							7	9790	7200	35	10620	7540	60				
65										27	9140	6300	65				
70										16	7890	5260	70				
													DEDUCTIONS FOR MAIN BOOM CAPACITIES				
													1230 LBS	890 LBS	720 LBS	610 LBS	STOWED JIB
													2840 LBS	2620 LBS	2500 LBS	2430 LBS	ERECTED JIB (RETRACTED)
													3170 LBS	2860 LBS	2700 LBS	2600 LBS	ERECTED JIB (EXTENDED)

BOOM LENGTH (FT)	BOOM LENGTH 91 FT (D)			BOOM LENGTH 103 FT (E)			BOOM LENGTH 116 FT (F)			BOOM LENGTH 128 FT (G)			LOAD BRIDGE (FT)				
	LOADED BOOM ANGLE (DEG)	CODE 1	CODE 3	LOADED BOOM ANGLE (DEG)	CODE 1	CODE 3	LOADED BOOM ANGLE (DEG)	CODE 1	CODE 3	LOADED BOOM ANGLE (DEG)	CODE 1	CODE 3					
		OVER REAR (LBS)	FULL 360° (LBS)		OVER REAR (LBS)	FULL 360° (LBS)		OVER REAR (LBS)	FULL 360° (LBS)		OVER REAR (LBS)	FULL 360° (LBS)					
15	79	30000	30000										15				
20	76	26010	26010										20				
25	72.5	22620	22620	78.5	22790	22790							25				
30	69.5	20000	20000	72.5	18080	18080	75.5	16060	16060				30				
35	66	17710	17710	70.5	16070	16070	73	14480	14480	75.5	12760	12760	35				
40	62.5	15740	15740	67.5	14360	14360	70.5	13050	13050	73	11760	11760	40				
45	59	14050	13620	64	12900	12900	68	11780	11780	71	10800	10800	45				
50	55	12620	11150	60.5	11610	11290	65	10640	10640	68.5	10000	10000	50				
55	50.5	11380	9250	57	10500	9380	62	9890	9490	66	9130	9130	55				
60	46.5	10340	7740	53.5	9760	7870	59	8970	7970	63.5	8320	8050	60				
65	41.5	9240	6510	50	8860	6640	56	8160	6740	60.5	7570	6820	65				
70	36.5	8110	5490	46	8060	5620	53	7430	5720	58	6910	5790	70				
75	30	7060	4620	41.5	7190	4750	49.5	6780	4860	55	6300	4930	75				
80	22	6160	3870	37	6300	4020	46	6180	4120	52	5750	4190	80				
85	7	5290	3200	31.5	5520	3380	42.5	5620	3480	49	5250	3550	85				
90				25	4830	2810	38	4940	2920	46	4790	3000	90				
95				15.5	4210	2300	33.5	4340	2430	42	4370	2510	95				
100							28.5	3800	1990	38.5	3870	2070	100				
105							21.5	3310	1590	34	3390	1680	105				
110							7.5	2860	1220	29.5	2960	1320	110				
115										23.5	2560	1000	115				
120										15	2200		120				
													DEDUCTIONS FOR MAIN BOOM CAPACITIES				
													520 LBS	460 LBS	410 LBS	370 LBS	STOWED JIB
													2370 LBS	2330 LBS	2300 LBS	2280 LBS	ERECTED JIB (RETRACTED)
													2520 LBS	2460 LBS	2410 LBS	2380 LBS	ERECTED JIB (EXTENDED)

50128S Crane Rental Rates:

- \$155/hour Manned Straight Time
- \$195/hour Overtime (Anything after 8 hours and Saturday all day)
- \$240/hour Double-time (Anything over 10 hours and Sunday all day)
- 4 or 8 hour minimum Port-to-Port options for crane
- \$90/hour Certified Rigger/Signalman (8 hour minimum)

PARTNERING TOGETHER FOR THE SUCCESS OF THE PROJECT